



NATURAL SKINCARE 2018 COLLECTION

Retail: [www.greenness.ca](http://www.greenness.ca)

Wholesale: [www.greennesscosmetics.com](http://www.greennesscosmetics.com)

# Contents



SAFFRON Collagen Mask	3	MINT Collagen Mask	15
SILK Moisturizing Mask	3	SNOW QUEEN Collagen Mask	15
BULGARIAN ROSE Collagen Mask	4	CUCUMBER Collagen Mask	16
ROSE HIP Collagen Mask	4	BLACK COFFEE Collagen Mask	16
VITAMIN C Collagen Mask	5	ICE LIFT HYDRATING Collagen Mask	17
ORANGE Collagen Mask	5	LIFT DERMAL Collagen Mask	17
JASMINE Collagen Mask	7	DIAMOND Collagen Mask	18
CHAMOMILE Collagen Mask	7	GREEN TEA Collagen Mask	18
ALOE VERA Collagen Mask	8	LAVENDER Collagen Mask	20
HONEY MILK Collagen Mask	8	ICE LIFT Neck Hydrating Mask	20
MIXED BERRIES Collagen Mask	9	ICE LIFT Collagen Eye Mask	21
LILY Collagen Mask	9	Post Epilation Lotion	21
BLACK BEAUTY Regenerating Facial Mask	10	Emerald Intensive Treatment Kit	22
RED WINE Collagen Mask	10	Emerald Elixir Anti – Ageing Cream	22
BAMBOO CHARCOAL Collagen Mask	12	Rubina Exclusive Set	24
CHOCOLATE Collagen Mask	12	Rubina Moisturizing and Repair Face Cream	24
24K GOLD Collagen Mask	13		
PLATINUM Collagen Mask	13		



# SAFFRON Collagen Mask



**All skin types, sensitive skin, moisturizing and firming**

This collagen mask containing vitamin E, collagen, amino and hyaluronic acids has whitening formula that contains ingredients to normalize the production of melanin. Provides deep moisturizing, improves skin texture, evens out age spots and reduces acne scars. Brings glow and promotes youthful skin radiance.

**Application:** Open foil pack, remove the two sections of the translucent crystal face mask, unfold and place on cleansed face. Remove after 20 minutes. Do not rinse or cleanse after use. Allow the remaining ingredients to be absorbed by the face.



# SILK Moisturizing Mask



**All skin types, anti-aging**

This deep hydration, moisturizing, firming facial mask is rich in silk protein, collagen, vitamin E, amino and hyaluronic acids, Aloe vera juice and rose oil. This luxurious treatment brightens, illuminates and promotes skin rejuvenation and elasticity.

**Application:** Take the mask out of the pouch and extend it. It has 3 layers, and the middle layer is silk mask. Remove the white layer first. Apply the mask on the face, and the blue layer is on the top. Gently press the mask and make it completely touch the skin. Remove the blue layer carefully from the gap on the left or right. Press the mask until it fully touches the skin again. Relax and enjoy for 15-20 minutes till the skin absorbs enough nutritional ingredients. Remove the mask, wash the face, or use tissue to remove remaining essences.





## BULGARIAN ROSE Collagen Mask



**All skin types, sensitive skin,  
moisturizing and firming**

Contains full-blossom rose from Bulgaria, packed with collagen, vitamin E, amino and hyaluronic acids. Helps brighten dull, darkened skin to appear softer, smoother, dewier, clearer, even-toned and healthier looking.

**Application:** Open foil pack, remove the two sections of the translucent crystal face mask, unfold and place on cleansed face. Remove after 20 minutes. Do not rinse or cleanse after use. Allow the remaining ingredients to be absorbed by the face.



## ROSE HIP Collagen Mask



**All skin types, anti-aging,  
hydrating and calming**

Rose Hip Collagen Mask is a rich formulation containing the goodness of nature's super oil – Rosehip. Infused with Aloe vera to soothe the skin, collagen, vitamin E, amino and hyaluronic acids.

**Application:** Open foil pack, remove the two sections of the translucent crystal face mask, unfold and place on cleansed face. Remove after 20 minutes. Do not rinse or cleanse after use. Allow the remaining ingredients to be absorbed by the face.



# VITAMIN C Collagen Mask



## Normal skin

Vitamin C brightening mask is enriched with vitamin C, collagen, plant extracts, peptides and hyaluronic acid to enhance skin brightness, normalize melanin, and reduce the formation of black spots. Protects against free-radical damage and helps to diminish the appearance of wrinkles and fine lines.

**Application:** Open foil pack, remove the two sections of the translucent crystal face mask, unfold and place on cleansed face. Remove after 20 minutes. Do not rinse or cleanse after use. Allow the remaining ingredients to be absorbed by the face.



# ORANGE Collagen Mask



## All skin types, anti-aging, freckles, uneven skin

This mask containing orange extract, collagen, vitamin E, fruit and hyaluronic acids eliminates excess oil without skin irritation. It stimulates renewal process, giving a fresh, bright and radiant appearance. The benefits also include deep moisturizing and preventing premature aging.

**Application:** Open foil pack, remove the two sections of the translucent crystal face mask, unfold and place on cleansed face. Remove after 20 minutes. Do not rinse or cleanse after use. Allow the remaining ingredients to be absorbed by the face.







# JASMINE Collagen Mask



**All skin types, sensitive skin, cuprous**

This mask containing jasmine oil, honey extract, collagen, vitamins E, amino and hyaluronic acids reduces swelling, irritation and redness. Regenerates, softens and firms mature skin.

**Application:** Open foil pack, remove the two sections of the translucent crystal face mask, unfold and place on cleansed face. Remove after 20 minutes. Do not rinse or cleanse after use. Allow the remaining ingredients to be absorbed by the face.



# CHAMOMILE Collagen Mask



**All skin types, anti-aging, freckles, uneven skin**

Hydrating skin treatment blended with Chamomile extract, collagen, vitamin E, amino and hyaluronic acids. The active ingredients of this mask relieve irritation and possess anti-inflammatory, regenerating, antibacterial and healing properties.

**Application:** Open foil pack, remove the two sections of the translucent crystal face mask, unfold and place on cleansed face. Remove after 20 minutes. Do not rinse or cleanse after use. Allow the remaining ingredients to be absorbed by the face.





# ALOE VERA Collagen Mask



**All skin types, sensitive, acne-prone and sun-damaged skin**

Aloe vera is known to have cleansing, soothing, healing and moisturizing properties. This face mask mixed with vitamin E, collagen, amino and hyaluronic acids soothes the skin by getting rid of inflammation and irritation.

**Application:** Open foil pack, remove the two sections of the translucent crystal face mask, unfold and place on cleansed face. Remove after 20 minutes. Do not rinse or cleanse after use. Allow the remaining ingredients to be absorbed by the face.



# HONEY MILK Collagen Mask



**All skin types, sensitive skin**

This tone-correcting mask lightens hyperpigmentation, increases firmness and elasticity to even the most sensitive skin. Honey and milk proteins restore a smooth supple texture while collagen, vitamins C and E and hyaluronic acid brighten, nourish, and promote skin's natural glow. Helps alleviate redness and calms irritated skin.

**Application:** Open foil pack, remove the two sections of the translucent crystal face mask, unfold and place on cleansed face. Remove after 20 minutes. Do not rinse or cleanse after use. Allow the remaining ingredients to be absorbed by the face.



# MIXED BERRIES Collagen Mask



**All skin types, aging skin**

Rich in antioxidants, protects skin from environmental damage and the signs of aging, such as sunspots, fine lines, and wrinkles. This antioxidant mask contains collagen, vitamins E and C, fruit and hyaluronic acids, brightens, energizes and moisturizes the skin while helping to combat free radicals to facilitate skin rejuvenation.

**Application:** Open foil pack, remove the two sections of the translucent crystal face mask, unfold and place on cleansed face. Remove after 20 minutes. Do not rinse or cleanse after use. Allow the remaining ingredients to be absorbed by the face.



# LILY Collagen Mask



**All skin types, dry skin**

This mask containing lily flower extract, collagen, vitamin E, amino and hyaluronic acids helps brighten dull skin, refreshes and revitalizes the skin complexion. Offers deep moisturizing properties for dry, irritated and sensitive skin.

**Application:** Open foil pack, remove the two sections of the translucent crystal face mask, unfold and place on cleansed face. Remove after 20 minutes. Do not rinse or cleanse after use. Allow the remaining ingredients to be absorbed by the face.





# BLACK BEAUTY Regenerating Facial Mask



**All skin types, anti-aging, whitens skin texture**

Blended with grape seed extract, vitamin E, collagen, Aloe extract and hyaluronic acid, this mask firms, brightens and helps to erase the look of fine lines. Eliminates free radicals, plumps and redefines skin texture.

**Application:** Open foil pack, remove the two sections of the translucent crystal face mask, unfold and place on cleansed face. Remove after 20 minutes. Do not rinse or cleanse after use. Allow the remaining ingredients to be absorbed by the face.



# RED WINE Collagen Mask



**All skin types, anti-aging**

This mask containing grape seed extract, Aloe extract, collagen, vitamins E, peptides blend and hyaluronic acid protects against signs of aging such as environmental damage, fine lines and wrinkles. This instantly hydrating, nourishing, super antioxidant treatment keeps skin healthy, vibrant, and youthful.

**Application:** Open foil pack, remove the two sections of the translucent crystal face mask, unfold and place on cleansed face. Remove after 20 minutes. Do not rinse or cleanse after use. Allow the remaining ingredients to be absorbed by the face.







# BAMBOO CHARCOAL Collagen Mask



**Oily skin types, acne-prone skin**

This mask is formulated with tea tree oil, Aloe vera extract, peptides blend, collagen, hyaluronic acid and bamboo charcoal, a natural element that has deep cleansing properties. This helps to heal blemishes, prevent breakouts, and keeps the skin shine-free. This gentle mask will penetrate the skin to unclog pores and get rid of excess oil. Skin looks vibrant, smooth and regenerated.

**Application:** Open foil pack, remove the two sections of the translucent crystal face mask, unfold and place on cleansed face. Remove after 20 minutes. Do not rinse or cleanse after use. Allow the remaining ingredients to be absorbed by the face.



# CHOCOLATE Collagen Mask



**All skin types, anti-aging**

This mask containing collagen, vitamin E, amino and hyaluronic acids revitalizes dull skin and smoothes rough patches. It's antioxidant rich formula boosts skin rejuvenation, diminishes the appearance of enlarged pores, and promotes skin circulation for a silky smooth feeling.

**Application:** Open foil pack, remove the two sections of the translucent crystal face mask, unfold and place on cleansed face. Remove after 20 minutes. Do not rinse or cleanse after use. Allow the remaining ingredients to be absorbed by the face.





## 24K GOLD Collagen Mask



**All skin types**

Highly effective, 24 K Gold Collagen Mask penetrates deeply into the skin layers and boosts rejuvenation on the cellular level. Reduces the appearance of existing signs of aging, but also helps prevent future wrinkles.

**Application:** Open foil pack, remove the two sections of the translucent crystal face mask, unfold and place on cleansed face. Remove after 20 minutes. Do not rinse or cleanse after use. Allow the remaining ingredients to be absorbed by the face.



## PLATINUM Collagen Mask



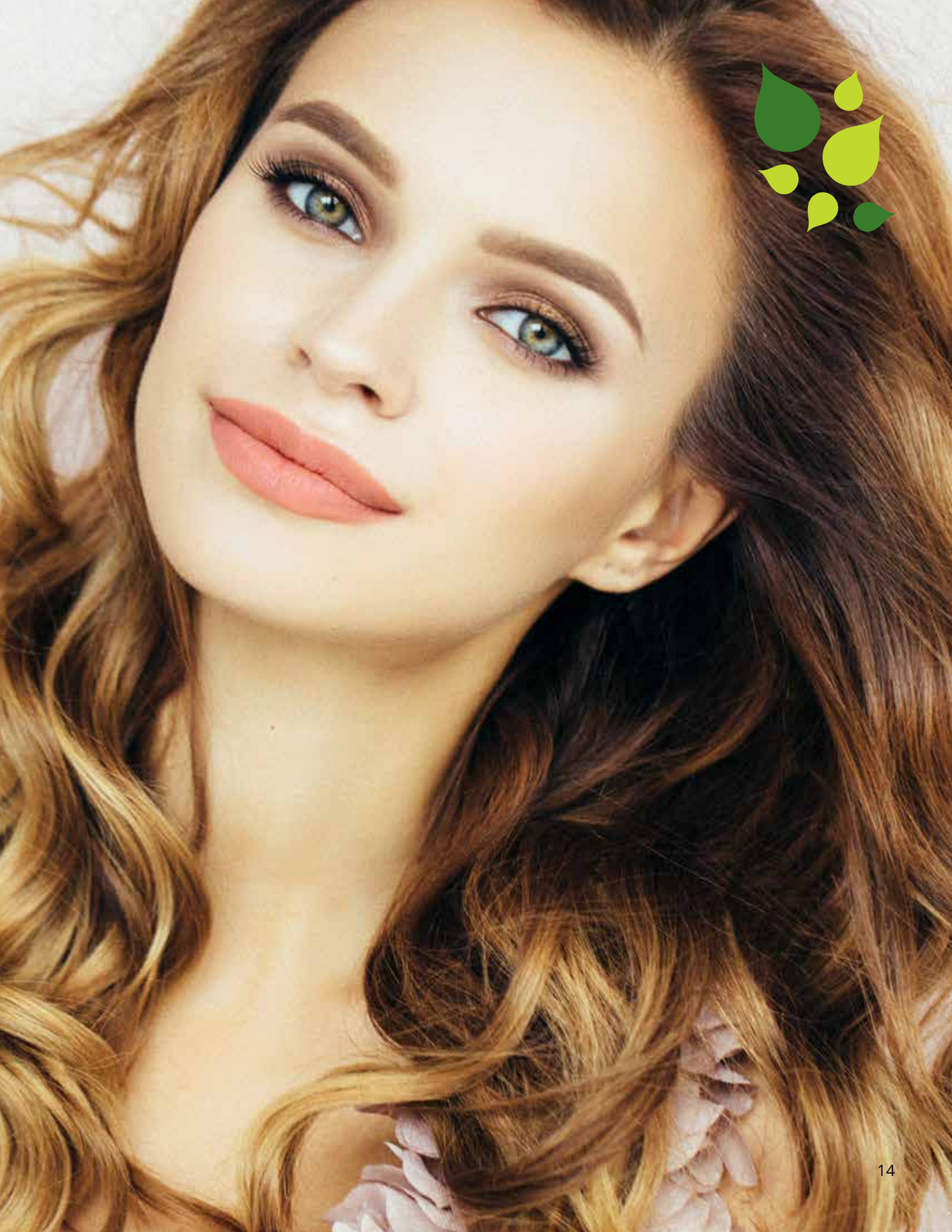
**All skin types**

This mask containing a Shea butter/ collagen/ peptides blend, Aloe juice and hyaluronic acid nourishes and provides an immediate lifting and moisturizing effect. Powerfully repairs and regenerates cellular structures and provides the skin with great firmness. Helps to remove wrinkles and expression lines and boosts skin elasticity.

**Application:** Open foil pack, remove the two sections of the translucent crystal face mask, unfold and place on cleansed face. Remove after 20 minutes. Do not rinse or cleanse after use. Allow the remaining ingredients to be absorbed by the face.







# MINT Collagen Mask



**All skin types, anti-aging,  
oily and acne prone skin**

Peppermint extract, collagen, vitamins E, amino and hyaluronic acids relieve inflammation, absorb excess oil, extract impurities and minimize the appearance of pores. The mask delivers intense moisture leaving skin radiant and refreshed for a deeply clean, fresh oil-free effect and a healthy looking complexion.

**Application:** Open foil pack, remove the two sections of the translucent crystal face mask, unfold and place on cleansed face. Remove after 20 minutes. Do not rinse or cleanse after use. Allow the remaining ingredients to be absorbed by the face.



# SNOW QUEEN Collagen Mask



**All skin types, anti-aging,  
hydrating and calming**

This mask containing rose oil, vitamin E, Aloe juice, collagen and hyaluronic acid hydrates the skin instantly, normalizes melanin and diminishes the appearance of wrinkles. With this mask, you will enjoy a luxurious feeling of relaxation. This special gorgeous mask helps to reveal your natural beauty and upgrade your self-confidence as a Queen.

**Application:** Open foil pack, remove the two sections of the translucent crystal face mask, unfold and place on cleansed face. Remove after 20 minutes. Do not rinse or cleanse after use. Allow the remaining ingredients to be absorbed by the face.





# BLACK COFFEE Collagen Mask



**All skin types, mature, dry, sun-damaged skin**

This mask containing coffee Arabica seed and leaf extract, vitamins C and E, antioxidants, peptides blend, Aloe Vera juice, rose oil, collagen and hyaluronic acid promotes metabolism of fat cells and reduces excess facial fat. Awakens the eye area and deflates puffiness around the face with a jolt of caffeine, erases dark circles, and smoothes deep lines.

**Application:** Open foil pack, remove the two sections of the translucent crystal face mask, unfold and place on cleansed face. Remove after 20 minutes. Do not rinse or cleanse after use. Allow the remaining ingredients to be absorbed by the face.



# CUCUMBER Collagen Mask



**All skin types, sensitive skin**

Hydrates and renews the skin, creating supple, healthy, firm, and radiant results. Boosts immune system of the skin cells.

**Application:** Open foil pack, remove the two sections of the translucent crystal face mask, unfold and place on cleansed face. Remove after 20 minutes. Do not rinse or cleanse after use. Allow the remaining ingredients to be absorbed by the face.





## ICE LIFT HYDRATING Collagen Mask



**All skin types, aging skin**

Tightens and smoothes, leaving the skin looking firmer and more supple. Increases cellular moisture storage capacity, repairs fibrous tissue, and enhances elasticity.

**Application:** Open foil pack, remove the two sections of the translucent crystal face mask, unfold and place on cleansed face. Remove after 20 minutes. Do not rinse or cleanse after use. Allow the remaining ingredients to be absorbed by the face.



## LIFT DERMAL Collagen Mask



**All skin types, anti-aging**

This patented formula enhanced with collagen, vitamins E, rose oil and hyaluronic acid combats the visible signs of aging: wrinkles, sagging skin, uneven tone, and dryness. It is an innovative, intercellular lipid delivery system that creates an immediate firming and lifting effect, leaving the skin taut and radiant. Tightens the facial contour, smoothes and relaxes lines, and revives the complexion.

**Application:** Open foil pack, remove the two sections of the translucent crystal face mask, unfold and place on cleansed face. Remove after 20 minutes. Do not rinse or cleanse after use. Allow the remaining ingredients to be absorbed by the face.



# DIAMOND Collagen Mask



## All skin types

This mask containing micronized diamonds, whitening agents, peptides, collagen, Jojoba oil, vitamins E and hyaluronic acid enhances skin tone and facilitates nourishment and regeneration of skin cells. Treatment improves blotchiness, elasticity, and facial contour modeling. Reduces signs of tiredness and stress. Scientifically developed to deliver the most advanced age-defying results in the luxury skin care market.

**Application:** Open foil pack, remove the two sections of the translucent crystal face mask, unfold and place on cleansed face. Remove after 20 minutes. Do not rinse or cleanse after use. Allow the remaining ingredients to be absorbed by the face.



# GREEN TEA Collagen Mask



## All skin types, anti-aging

This mask containing Green Tea extract, collagen, vitamin E, amino and hyaluronic acids tightens and lifts the skin, enhances skin elasticity and supplies the skin with moisture and nutrition. Relieves rough, tired skin caused by stresses.

**Application:** Open foil pack, remove the two sections of the translucent crystal face mask, unfold and place on cleansed face. Remove after 20 minutes. Do not rinse or cleanse after use. Allow the remaining ingredients to be absorbed by the face.







# LAVENDER Collagen Mask



**All skin types, sensitive**

This luxurious, aromatic mask contains lavender oil, vitamin E, collagen, Aloe vera juice, and hyaluronic acid. This treatment conditions and soothes the skin suffering from excessive dryness, stress and ultraviolet sunlight. Promotes cellular regeneration and balances serum production. Lavender calming effect revitalizes, energizes and hydrates tired skin.

**Application:** Open foil pack, remove the two sections of the translucent crystal face mask, unfold and place on cleansed face. Remove after 20 minutes. Do not rinse or cleanse after use. Allow the remaining ingredients to be absorbed by the face.



# ICE LIFT Neck Hydrating Mask



**All skin types**

This mask containing collagen, vitamins E, lavender oil and hyaluronic acid tightens, smoothens, lifts, and moisturizes leaving the gentle neck skin looking firmer and more supple. Increases cellular moisture storage capacity, repairs fibrous tissue, and enhances elasticity.

**Application:** Open foil pack, remove the neck mask, and place evenly over the neck area. Remove after 20 minutes. Do not rinse or cleanse after use. Allow the remaining ingredients to be absorbed.



# ICE LIFT Collagen Eye Mask



## Normal skin

This high potency eye treatment containing collagen, vitamins E, lavender oil and hyaluronic acid provides lifting and reparative benefits to the delicate skin under the eyes. It helps to fight dark circles, reduces puffiness, hydrates the skin, increases elasticity and diminishes wrinkles.

**Application:** Place sealed mask in warm water for 1-2 minutes. Open foil pack, remove the two sections of the gel eye mask and lay evenly under the eyes. Leave on for 15-20 min. Remove mask and discard, massage in the remaining essence from the pack. Do not rinse or cleanse the skin around the eyes after use, finish with an eye cream.



# Post Epilation Lotion



## All skin types

Greenness Post Epilation Lotion is an essential part of natural skincare. This must-have product is manufactured in Italy with high-quality locally-sourced ingredients. Created for soothing skin after hair removal by laser or shaving, Greenness Post Epilation Lotion is an emulsion formulated with active ingredients. These ingredients are never boiled to ensure they preserve formula potency and product effectiveness.

Shaving strips the skin of moisture making it vulnerable to dryness and itch. Greenness Post Epilation Lotion hydrates, soothes and nourishes the skin allowing it to regenerate faster. High-grade natural ingredients have an added benefit of slowing down hair growth and ingrown hair when Greenness Post Epilation Lotion is applied.

Its main active ingredients include Arnica, Hamamelis, Hypericum, Aloe vera, Willow extract, hydrolyzed soy protein, Bisabolol, vitamin E, salicylic acid, Allantoin, and almond oil. Made in Italy.



# Emerald Intensive Treatment Kit



**All skin types**

## ***Anti-Ageing Mask***

An exclusive, rich and creamy formula quickly acts as an activator of brightness and youth.

## ***Anti-Ageing Cleansing Milk***

Formulated for sensitive skin, enriched with synergy of oligo elements, promotes nourishing and anti-ageing effect.

## ***Anti-Ageing Tonic Lotion***

An exclusive formula containing distilled water of Rose flowers, promotes skin's freshness with an anti-ageing effect.

## ***Anti-Ageing Cream***

Its Innovative and unique formulation with emerald and "essence" has a rich, soft and silky texture.

# Emerald Elixir Anti – Ageing Cream



**All skin types**

Exclusive formulation enriched with vibrational essence of emerald, rosehip, grapeseed, vitamin E and Shea Butter is ideal for preserving the beauty of the skin by preventing and effectively protecting the skin from photo-ageing and free radicals, while effectively moisturizing and nourishing it.

It is ideal for both mature and young skin types and is recommended both as an anti-ageing treatment and as a preventative treatment. The skin appears younger, silky, firm and glowing. The signs of time are reduced.





## Rubina Exclusive Set



All skin types

### ***Alcohol Free Moisturizing Tonic Lotion***

The special synergy between the ruby essence, marine collagen and the hyaluronic acid has a nourishing and anti-ageing action.

### ***Refreshing and Moisturizing Gel Mask***

The combination of ruby essence with fruit extracts and the Aloe vera gel increases the skin's flexibility.

### ***Moisture Repair Cream***

Rose distilled water, fruit extracts, and Aloe vera extract refresh and energize the skin while maintaining the natural level of moisturizing.

### ***Moisturizing and Restructuring Rubina Cream***

This face cream has a silky texture containing ruby vibrational essence and nourishing elements to re-establish the skin's natural level of moisturizing.

## Rubina Moisturizing and Repair Face Cream



All skin types

A face cream with a silky and comfortable texture containing ruby vibrational essence, hyaluronic acid, Rosehip oil and Marine collagen guarantees an optimal skin rejuvenation establishing skin's natural moisturizing. It is suitable for treating undernourished, dehydrated skin and all skin types requiring hydration and care.



Retail: [www.greenness.ca](http://www.greenness.ca)

Wholesale: [www.greennesscosmetics.com](http://www.greennesscosmetics.com)

TOLL FREE: 1.800.746.2262

